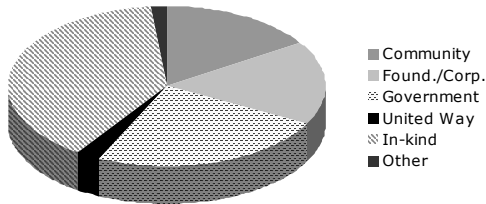


# SCS Annual Report : 2009 - 2010

## FINANCIAL OVERVIEW

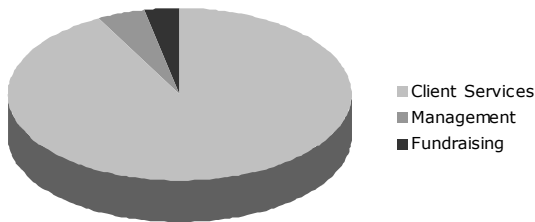
### Revenue

Community Support	\$641,435
Corporate / Foundation Support	679,060
Government Grants	972,405
United Way	102,417
Other	65,308
Investments / Interest	53,603
Loss on assets disposed	(351)
In-Kind Donations	1,574,654
<b>Total</b>	<b>\$4,088,531</b>



### Expenses

Program / Client Services	\$3,848,611
Support Services	
Management	181,556
Fundraising	139,454
<b>Total</b>	<b>\$4,169,621</b>



## Financial Notes

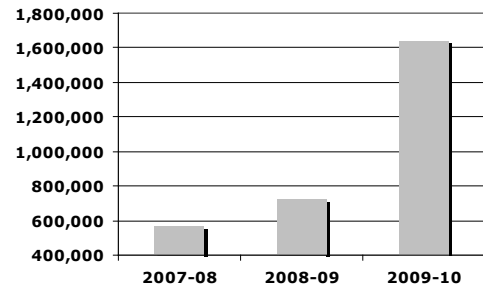
1. The 2009-10 audit from Deborah Daly, CPA, was 100% clean (no findings or recommendations).
2. Our overhead has consistently been 10% or lower, very low for nonprofits, especially smaller ones with fewer cost centers to distribute overhead (the nonprofit standard is less than 25%).
3. Last year we had 8 full-time staff. Annual volunteer hours now equal those of 12 full-time employees.
4. Thanks to Federal Grants, the Financial Aid to clients for 2009-10 increased by \$921,674 from 2008-09 \$717,283.
5. The audit and financial statements are available for anyone to view.

## SERVICE OVERVIEW

### Services Provided

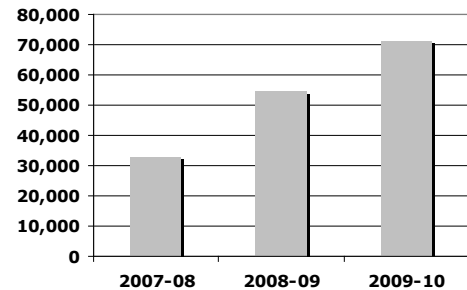
	08-09	09-10
Financial Assistance cases/people	960	1,650
Food & other in-kind aid cases	18,082	22,880

### Amount Spent on Financial Aid for Clients\*



\*Excludes pass through direct assistance to clients.

### Number of People Receiving Food



## Program Notes

1. The financial cases provide assistance to prevent eviction and utility disconnections, to obtain otherwise unaffordable medical care to pay for car repairs and other critical needs.
2. According to funders' requirements, a person receiving food or financial aid is certified every year.
3. The number of families/households participating in our food programs has increased over the last 5 years from 725 to over 1,465\*, and families that came only several months a year now come every month.

\*Excludes stimulus, kids and produce boxes.