



# Sunnyvale Community Services

— Preventing Homelessness and Hunger in Our Local Community —

## How well did you sleep last night?



In our role as the community's safety net, we've received a growing number of calls from residents, businesses, and Public Safety about RV and car encampments in Sunnyvale, asking SCS to reach out to people living in their vehicles and connect them to our services. Our case workers and partners at Downtown Streets Team knock on doors, wave through windows, and leave information sheets. We find that many people living this way are working during the day. But with no place to live, they are constantly looking for safe, well-lit places to park at night.

One of the first questions our case workers ask is, "How did you become homeless?" We know from our own data that loss of income is the leading cause of evictions for many people here in our community. But, loss of income doesn't always mean loss of a job. More than 1/3 of workers at small businesses (under 100 employees) don't have sick time, which means if they miss work for an illness, they are not paid. Part-time workers don't have steady work shifts from week to week. A loss of just a few hours of work can lead to losing one's home.

Many people sleeping in RVs and cars are hoping it's a temporary situation until they are able to find more permanent housing. Unfortunately, their options are limited if they want to live close to jobs. For teachers, nursing assistants, car mechanics, and bus drivers, affordable housing is often 40+ miles away.

SCS has responded to this new reality, with specialized services to prevent homelessness and quickly help people find housing. We now have dedicated Housing Case Managers who focus on connecting landlords and tenants. A Benefits Specialist connects residents with government services. Financial coaching helps renters improve their credit scores. For the most vulnerable, we have intensive Case Management services, helping to stabilize families. Our year-round food program has also expanded from four to 22 distribution days each month, allowing a family of four to receive food valued at \$462/month.

The housing crisis and the growing income divide will not be easily fixed. SCS continues to advocate for policies and programs that will help low-income residents. *We are grateful for the generosity and caring concern shared by all of you—our neighbors helping neighbors. Thank you!* ■

—Marie Bernard, Executive Director

## Record-Breaking Grant for SCS!

The Sobrato Family Foundation has awarded SCS a challenge grant of \$125,000!



SOBRATO  
FAMILY  
FOUNDATION

We have until July 1st to raise an additional \$125,000 and receive a second year of funding of \$132,000. The 5% increase in year two is to cover general operating inflation costs, another way that the Foundation supports nonprofits. That adds up to a total of \$328,000!

### Here's how it works

● If you haven't donated to SCS in the past two years, 100% of your donation will be matched by the Sobrato Family Foundation.

● If you increase your donation from last year, the increase will be matched by the Foundation.

#### YEAR ONE

Sobrato Challenge	\$125,000
Your Donations	\$125,000

#### YEAR TWO

Sobrato Match	\$132,000
---------------	-----------

<b>TOTAL</b>	<b>\$382,000</b>
--------------	------------------



SAVE the DATE!

## 2018 Holiday Auction

Thursday, November 15 | 5:00 – 7:30 PM

Elks Lodge | 375 N. Pastoria Avenue



It's time for the SCS Annual Holiday Auction! Join us for an evening of good food and good cheer while bidding on one-of-a-kind holiday gifts for everyone in your family. Auction items include wonderful family vacations, restaurant outings, wine tastings, theater tickets, and so much more.

Thank you to all who graciously donate gifts, services, and volunteer time to make this event possible. We again thank the **Sunnyvale Elks Lodge** for donating their venue, **LinkedIn** for catering the evening with savory appetizers, and **Cake4Kids** for providing delicious bite-sized desserts.

**The Auction is a free event**, but we ask guests to bring an **unwrapped new toy** to help stock the shelves of the SCS Community Holiday Center. ■

## MAJOR SPONSORS



## President's Corner

I have been fortunate to be a part of this community for many years, working with and serving the people who call our community home. It has become clear to me that change is our constant companion in Silicon Valley, as in all aspects of our lives. Growth is therefore vital, and necessary to our survival.

As I begin my term as Board president, I find myself reflecting on the importance of growth. Every time we try something new or interact with someone whose life experiences are different from ours, we grow. Here at SCS, at home, in my church, out in the community, and even through my international volunteer work — I am astounded by how we find strength to grow, even in the most daunting of circumstances. I see it in our own clients, as well as among the dedicated supporters who make our work possible. You never fail to walk with us as we move forward, tackling the challenges that face our community.

The demand for our services increases daily, which necessitates another kind of growth — our agency's continued evolution, as we always seek to serve our clients in the most efficient, effective, and compassionate way. The challenges can feel overwhelming, but we grow in strength and resilience too, combating hunger and homelessness, one client at a time. Thankfully, our community's seed of generosity took root long ago, and continues to yield the kind of support that enables us to meet the growing need.

On behalf of the Board, directors, staff and volunteers, we thank you for helping us meet the ever-growing needs of our communities. It is an honor to have you by our side. ■

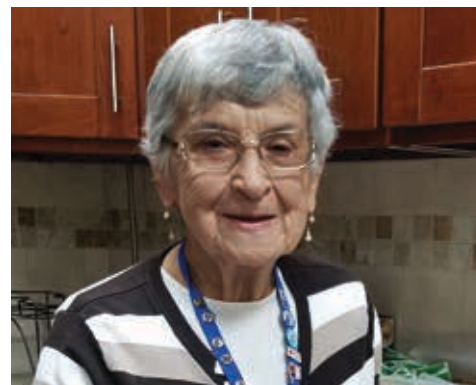
*Jorge F. Marsal, SCS Board President  
Senior Pastor, Sunnyvale International Church*



## VOLUNTEER PROFILE Gloria Maranon



For 25 years (and counting) Gloria Maranon has been bringing her warm smile to SCS and helping in any way that she can. Gloria first came to SCS to lend her Spanish language ability. She wanted something meaningful to fill her time while her husband and sons were at work. In those days, she volunteered 25 hours each month, always showing up when needed, bringing her strong work ethic and amazing cooking talent to support the staff and volunteers at SCS. Life has not always been easy for



Gloria, and she is grateful that volunteering at SCS has been a "bright spot" for her. When asked which volunteer role has been her favorite through the years, Gloria responded, "All of them!" Her favorite SCS event, however, is the Community Holiday Center, where she caters lunch for our entire staff and volunteers each day that the center is open. Gloria has a heart of gold. We can't thank Gloria enough for all that she continues to do for our staff, our clients, and the community of Sunnyvale. ■

## #GIVING TUESDAY™

GIVE ONLINE!  
**Mark Your Calendar  
for November 27**

Forget Black Friday and Cyber Monday! **#GivingTuesday** is a national event dedicated to online giving to your favorite nonprofit. Come celebrate with us! We will be hosting an **Open House on Tuesday, November 27, 2018 from 2:00 – 6:00 PM.** Come by and take a tour of the facility and enjoy light refreshments. All donations from #GivingTuesday will go towards helping the families, seniors, and homeless individuals who will be walking through our Community Holiday Center this December. Let's keep working together to make this a special year for all of our families in need. *Thank you for your kind support!* ■

## MATCHING SPONSORS



## Did You Know?

# 96%

of our clients have low- to extremely low-income,\* making less than \$50,200 gross pay, which is 200% of the official Federal poverty level

# \$1,295

is the recommended monthly rent payment based on the above gross pay (1/3 take-home pay)

# \$2,765

the average rent in Sunnyvale, CA

# 99%

of Sunnyvale rents are over \$1,500/month\*\*

\* According to Federal "HUD" standards

\*\* Source: RentCafe.com / August 2018



## Sunnyvale Singers Ring in the Holidays for SCS

Sunnyvale Singers has been a vital part of the Sunnyvale Community for over 40 years. Their concerts, a wonderful mix of traditional and entertaining choral music, are not to be missed. For the past eight years Sunnyvale Singers has turned their rehearsal concerts into benefit concerts for SCS. Over the years, we have received \$26,000 from these concerts and we are grateful for their melodious support! Be sure to visit [sunnyvalesingers.com](http://sunnyvalesingers.com) to learn more about the community chorus and its upcoming concerts. ■

## Neighbors in Need

### Slow and Steady Pays the Bills

When Luisa came to SCS, she had been unemployed for several months and as a result, had been paying less than the full amount due each month to her landlord. Faced with a 3-day notice to leave her apartment, she came to SCS for help. Her situation qualified her for intensive case management and our staff was able to negotiate with her landlord to implement a payment plan that incorporated both the rent due along with the overdue money owed. Luisa also signed up for our food program and has been receiving produce, pantry, and monthly food each month, saving her hundreds of dollars that could be used toward rent. In just four months she is at the finish line with just one more payment before her debt is cleared. ■

### A Clean Start

Compromised mental health led Ann down a path of hoarding, job loss, and eventually deep debt. She relied on high-interest payday loans to cover her rent, but when a fire broke out in her neighbor's apartment and maintenance staff couldn't use her apartment for access due to hoarding, it became apparent to her landlord that her unit was a safety hazard for the whole building. Ann was given notice to clean up or leave. With nowhere else to turn, she came to SCS for help. Through intensive case management services, SCS was able to help her with communicating with the landlord and create a cleaning plan that was respectful of her mental health symptoms while also bringing her unit back to code and avoiding eviction. In addition, SCS was able to help with the past due rent, bringing her up-to-date with rent payments to her landlord. As part of her case plan towards self-sustainability, Ann was assisted in applying for jobs and was shortly hired for a full-time position. Through her hard work alongside SCS case management services, she is now working full-time, has minimal debt, and is excited for her future. ■

### Home for Good

He never thought he would need to ask for help. Jose was a single parent and trained nurse who paid many months' rent in advance just for the security of having a safe home for his child and himself. But, his job assignment ended and rent was coming due faster than he could earn the money to pay. After selling his car and asking family for support, Jose was out of options so he came to SCS for help:

*"I sat in Maria's office with sweaty hands swallowing the last of my pride. I had no choice but to bite the bullet. I could be homeless but my child could not. Our landlord came to Sunnyvale Community Services to pick up the check himself. It was the most humiliating day of my life but we were over the hump. My new job is not the high water mark for my income but it's not bad either. We are putting away money each month...Our bills are paid and I'm sending money to my mom in Florida to help with her bills. We are back on track. It was a terrifying episode." ■*

\*All names have been changed to protect the privacy of our clients.





# Ready for School from Head to Toe

Backpack Day on August 3rd marked the culmination of our signature summertime “Head-to-Toe” program, when families receive extra kid-friendly food over the summer months while schools are closed and meal programs unavailable. With significant funding from **Sares Regis Education and Community Foundation** and **CityLine Sunnyvale**, we were able to serve a record number of children this year, distributing 1,550 backpacks, Payless shoe gift cards, dental hygiene kits, and extra groceries to help children be ready for school from “head to toe.” An additional 250 backpacks stuffed with age-appropriate school supplies have been distributed to local Sunnyvale schools to give to low-income transfer and homeless students throughout the school year.

## MAJOR SPONSORS

We are grateful to our many sponsors who help make our summer Head-to-Toe program such a vital part of the services we provide to our young neighbors in need:

**Sares Regis Education and Community Foundation**  
**CityLine Sunnyvale**

Intuitive Surgical Employees  
 Jay Paul  
 Texas Instruments  
 Western Digital

Walmart  
 Synopsis  
 NetApp

Pharmacyclic Employees  
 City of Sunnyvale Employees  
 Children's Dental Center  
 Alexia R. Lucero, DDS



In addition, we appreciate all the businesses that contributed to the **Sares Regis Education and Community Foundation / CityLine Sunnyvale** grant:

Alcal Specialty Contracting, Inc.  
 American Trash Management  
 Argonaut Window and Door, Inc.  
 BKF Engineers  
 Bright Green Strategies, Inc.  
 Capital City Drywall, Inc.  
 Central Concrete  
 Charles M. Salter Associates, Inc.  
 Coastal Construction & Lumber Co.  
 Creative Design Consultants, LLC  
 Daley's Drywall & Taping, Inc.  
 Devcon Construction Inc.  
 FC Framing

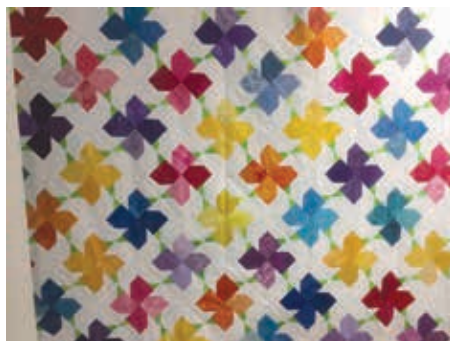
Ferma/Green Box  
 Ferma Corporation  
 Hunter Storm  
 Joseph J. Albanese, Inc.  
 KDS Plumbing, Inc.  
 Leaf Communication Consulting  
 Maniglia Landscaping  
 MCH Electric, Inc.  
 MDE Electric Company  
 Nishkian Menninger Consulting  
 and Structural Engineers  
 Preston Pipelines, Inc.

Redwood Group  
 Residential Design Services  
 RGA Design, LLC  
 Service By Medallion  
 Sprig Electric  
 Studio T-SQ., Inc.  
 Teichert Construction  
 Teichert Foundation  
 The Guzzardo Partnership, Inc.  
 United Mechanical Inc.  
 Vance Brown, Inc.  
 VPI Quality Windows  
 W.L. Hickey Sons, Inc.



## SCS Auxiliary Kicks off the Holiday Season

The all-volunteer SCS Auxiliary did it again! Their fall boutique was a sell-out with beautiful homemade crafts and scrumptious home-baked goods, all benefiting Sunnyvale Community Services. This year's quilt raffle featured an 86" x 86" quilt decorated with vibrant geometric shapes to brighten any room. The quilt was designed and stitched by the SCS Auxiliary, with backing provided by The Granary, Sunnyvale's quilt shop at 1326 S. Mary Avenue. We are grateful for the talented Auxiliary whose unflagging support is a vital part of the success of SCS. ■



## Donate a Car

Wondering how to get rid of your old car and give back to the community? It's easy. Contact Donate for Charity at (866) 392-4483 and they will pick up and handle all the paperwork. Be sure to specify SCS when you call. SCS will get the proceeds and you will get your tax deduction!



Non profit tax ID #94-1713897



## Saturday Pantry in Its Second Year

In 2016 we experimented with opening our Pantry up two Saturdays each month and since then we never looked back. On the first and third Saturday of each month, nearly 100 families stop by during our 9:30 - 11:30 AM hours and “shop” for essentials like dairy, produce, meats, household items, baby formula, diapers, and more. Our pantry inventory comes from usable but excess food and miscellaneous products from generous partners including **Amazon, Whole Foods, Target, and Grocery Outlet**. Our grocery rescue volunteer, Jordan Henck is having a great time driving our big truck every Saturday morning! If you would like to join the Saturday morning fun, we have a wide variety of volunteer opportunities to choose from. Just go online and apply at: [svcommunityservices.org/volunteer-sign-up](http://svcommunityservices.org/volunteer-sign-up). ■



## Homeless Shelter Meeting at SCS

In August we welcomed over 40 community members to learn more about the pilot program to operate the North County Homeless Shelter year-round. SCS staff were joined by our partners at HomeFirst, who operate the shelter at 999 Hamlin Court in Sunnyvale. Attendees were welcomed by Sunnyvale City Councilmember and Vice Mayor, Larry Klein, and learned about volunteer opportunities, donating, and other support needs. With an ongoing increase in the number of homeless individuals in North County, we are grateful to the Santa Clara County Board of Supervisors for approving this year-round pilot. ■



## Rides for Toys - New Location!

On **Saturday, November 24th from 10:00 AM - 1:30 PM**, the whole family is welcome to come to the Macy's parking lot (downtown, between Macy's and Target) for Sunnyvale Department of Public Safety's annual “Rides for Toys” event. This year your participation is more important than ever, with toys needed for every age group, especially ages 7 - 11. Children attending will not only have the opportunity to learn the importance of giving to less fortunate kids, but they'll also have a chance to ride in a real fire truck! (Parents can ride too!) All donations will benefit the Community Holiday Center at SCS. ■



# ..... Leaving Your Legacy to SCS .....

Your gifts are a lifeline for the homeless and the hungry that we serve. Your donations, figuratively speaking, are the bread and butter of SCS. You give because you embrace our vital mission and purpose, and some of you want to contribute more substantially but are unable to provide a significant gift today. We have an option for you. Perhaps a planned gift is the way to go.

A planned gift is an investment in the future of SCS. It is a gift that is committed in the present but allocated at a future date. Planned gifts are commonly donated through a will or trust and most often are granted once the donor has passed away.

One anonymous donor has this to say about making a planned gift to SCS:

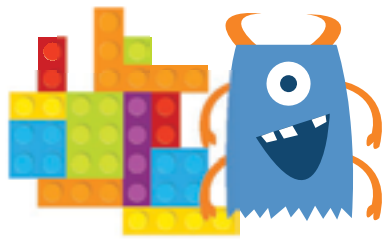
*"I feel strongly about giving back. What little bit I will have when I am gone, I want to leave to SCS. I find it very satisfying knowing I can do some small thing and leave a legacy."*

Leaving a legacy demonstrates to others that you are confident in the long term outlook of SCS and its ability to use your gift to continue its mission of preventing homelessness and hunger in Sunnyvale.

**It is easy to leave a legacy gift to SCS.** Simply speak with your estate planner and s/he will tell you how to designate SCS in your will or trust. Our non-profit Tax ID number is: 94-1713897. Please inform us of your intention so that you may be appropriately thanked and recognized. ■

Contact **Arcadio Morales** at **408.470.3023**

## Drive Partners Needed! Toys, toys, toys!



### We are short on toys for our Community Holiday Center!

Can you hold a toy drive? Schools, offices, churches, and neighborhoods are all great places to hold a drive. We'll provide the barrels and flyers, you collect the toys!

For more information, contact [info@svcommunityservices.org](mailto:info@svcommunityservices.org).

.....  
**Toys needed by Nov. 30**

## “Thank You!”

Thank you for your kindness and support during a very difficult time and please pass my gratitude along to all the people involved. Keeping my home intact is the most important thing...I hope soon that I can pay it forward.

—SCS Client



## Sign up for our monthly eNewsletter

Visit [www.svcommunityservices.org](http://www.svcommunityservices.org) to join our email list.



## Google's "Meet the User Palooza"

This July, SCS was invited to participate in the biggest one-day user study Google had ever done. Dubbed "Meet the User Palooza," the intent was to have local residents—nearly 200 of them—share how they use technology through conversations with members of a user experience team at Google.

In partnership with **Downtown Streets Team** and Sunnyvale's **NOVA Job Center**, SCS recruited over 50 individuals. All were provided with transportation and lunch with the Googlers over lively conversations about how technology plays a part in their lives. The goal was to engender greater understanding and empathy between designers and those who use technology, whether it be from Google or another company, so that products can better meet people's needs. One attendee wrote to us after the event and said, "I want to thank SCS for allowing me to participate in the trip to Google. Being able to be a part of programs like this promotes mental, physical, emotional, and occupational opportunities for those who may not normally have this amazing experience." ■

# Major Program Contributors

Amazon  
Anonymous (5)  
The Applied Materials Foundation  
Donna L. Beres  
Mary J. Bradley  
Nicholas & Anna Brosnahan  
Cadence Design Systems Inc.  
California New Car Dealers  
Association Employee Benefits Trust  
D. Delange & G. Calvert  
Christopher & Lucy Cesar  
Church of Jesus Christ of Latter-Day Saints  
City of Sunnyvale  
City of Sunnyvale Employees' Giving Campaign  
Community Services Agency of Mountain View & Los Altos  
Lynn & Bill Crane  
Scott Davidson  
Denali Summit School, Sunnyvale  
Destination: Home  
Devcon Construction Incorporated

Jim & Celia Dudley  
Connor & Mikila Duke  
Laura & Fred Egley  
El Camino Healthcare District  
Emergency Food & Shelter Program (EFSP)  
Encore.org  
Bruce L. & Vivian A. Euzent  
John Finney  
Flowers Bakery  
Cynthia J. Fong  
Fund for Shared Insight: Listen for Good  
Nancy Garrett  
Google, Inc.  
John & LuAnne Graves  
James R. Griffith  
Dan & Donna Hafeman  
Glenn & Cynthia Hendricks  
Olaf Hirsch & Melinda Hamilton  
Homestead High School  
Riley Howard  
Hunter Properties

Hurlbut-Johnson Charitable Trusts  
Intero Foundation Inc.  
Intuitive Surgical  
Derek & Tracia Iwamoto  
Kaiser Permanente Santa Clara  
Gregory Krodell, in memory of Vivian Krodell & Mason Krodell  
Lane Partners  
Law Foundation of Silicon Valley  
Martin & Anita Lee  
LinkedIn  
Steve Lippert, Allana, Buick & Bers  
Lockheed Martin Space Systems Company  
Jerry & Linda Mar  
Barbara McClellan Foundation  
Regis & Dianne McKenna  
Don & Irene McMullen  
The Martin Pool & Stephanie Miller Fund  
Gaylord & Carmita Mousing  
NetApp  
New Seasons Market

Gene & Margaret Oishi  
Omar Family Charitable Fund  
Thomas Pagele  
Palo Alto Medical Foundation,  
Camino Medical Group  
Eileen Paulsen  
Payless Shoes  
Pelger Family Charitable Foundation  
Judith Petroski  
Grace Randle  
Jim & Janet Reynolds  
The Caroline M. Ryan Living Trust  
Sacred Heart Community Service  
San Francisco Chronicle Season of Sharing  
San Jose Mercury News Wish Book Fund Inc.  
County of Santa Clara  
Santa Clara Valley Transportation Authority  
Sares Regis Education and Community Foundation

Second Harvest Food Bank of Santa Clara & San Mateo Counties  
Severns Family Foundation  
Lois Sibbach  
Silicon Valley Community Foundation  
Silicon Valley Monterey Bay Council, BSA  
Sobrato Family Foundation  
Specialty Solid Waste & Recycling  
Ferguson-Spires Fund  
Sprouts, Sunnyvale  
St. Luke Lutheran Church  
Star One Credit Union's Community Involvement Committee  
Chad & Elizabeth Steward  
Judy & Bob Steward  
Sunbasket  
Sunlight Giving  
Sunnyvale Grocery Outlet  
Sunnyvale Community Services Auxiliary  
Sunnyvale International Church  
Sunnyvale Presbyterian Church

Sunnyvale Public Safety  
Sunnyvale Rotary Club  
Sunnyvale School District  
Synopsis, Inc.  
Target, Sunnyvale  
Teichert Foundation  
A. Teichert & Son, Inc.  
Michael Trent & Angela Telerski  
Texas Instruments Corp.  
Toyota, Sunnyvale  
Toys "R" Us  
Tzu Chi Foundation  
U.S. Department of Veterans Affairs  
Union Bank  
United Way Bay Area  
Village Harvest  
Estate of Paul Walkowiak  
Walmart  
Western Digital Corporation Fund  
White Sierra  
Whole Foods  
Yahoo Employees Foundation  
Tad & Florence Yoshikawa

## Adopt-a-Day Honor Roll

Underwriting SCS' \$1,000 a day operating costs not covered by grants or contracts

### 4 Days = 2000 meals-in-a-can

Anonymous (1)  
Mary Ellen & Stephen Barasch  
Michael & Theresa Benkert  
Shane & Kimberly Jacksteit  
Hans-Theo Jungeblut  
Michael & Debbie Klein, State Farm Insurance  
Kenneth & Susie Lamarche  
Level 10 Construction  
Mission City Community Fund  
Pacific Gas & Electric Company  
Pine Cone Lumber  
Mr. & Mrs. Wolfgang Polak  
Safeway Foundation  
Courtney Shenberg  
ZSPACE, Inc.

### 3 Days = 3,000 quarts of milk

Anonymous (3)  
Camille Barnes-Mosley  
Bob & Cheryl Bartholomew  
Mike & Diana Brzozowski  
California Water Service Company  
Thomas & Judith Cerny  
Robert & Christine Cloke  
Crosswalk Community Church  
Peter N. Doelling  
Barbara Evatt  
Andrew & Kathleen Fung  
GP Accessories  
Richard & Diane Horn  
Russell & Susan Hull  
Mr. & Mrs. Mustafa Hussaini  
Jockers Family Foundation  
Bob Kenney  
Keith & Ellen Kitchen  
Matthew & Donna Leacock  
Lockheed Martin Employees' Foundation  
Lindy Lopez  
Robert & Kathleen Menifee  
Paul & Penny Murray  
Benjamin Newsom  
Pearson Automobile Company, Inc.  
Eric & Julia Roberts  
William R. Roberts, Architect  
Thomas N. Kilsdonk & Beverly Sanford  
St. Cyprian Church  
Sunnyvale Elks Lodge/B.P.O.E. #2128  
Sunnyvale FISH  
Rimas Svarcas  
Zanotto's Family Market, Sunnyvale

### 2 Days = 1260 cans of tuna

Alpha Delta Kappa, Alpha Lambda Chapter  
Anonymous (2)  
Elizabeth & Paul Archambeault  
Valerie Armento  
Bobbie Lemberg Armstrong  
Ajit Balakrishna  
Charles L. Barnrd, Jr.  
Jim & Lynn Briody  
Stephen & Susan Campello  
Dean & Wilma Chu  
Anita Clemenston  
John & Maya Clifton  
Richard & Anne Crowley  
Cupertino Host Lions Club  
Karen Davis  
Eric DeRitis  
Fairwood Elementary School  
Faultline Brewing Co., Sunnyvale  
Susan Fisher  
Food Runners  
Philip & Junko Freidin  
Fujitsu  
Virginia Gelczis  
John V. George  
Michael & Kelly Giannini  
Wren Clark & Martin Gorfinkel  
Michael & Susan Grabau  
Jeffrey William Grafton  
Melanie & Robert Hathaway  
Debra D. & Spencer Hiraki  
Albert Howard  
Ann Infield  
JRP Electric  
Carla J. Klein  
Philip Kurjan  
Rick & Mary La Frentz  
The Mary W. Lernihan Charitable Fund  
Duane Loos  
Los Altos High School  
Tara Martin-Milius  
Laura McCarty  
Stephen & Jennifer McHenry  
David & Holly Mendel  
Debra Miedema  
Sunnyvale MOMS Club  
Jerry & Julie Nabhan  
Russell & Mira Nakano  
Philip C. Nies  
Opportunity Fund  
Richard & Deborah Owens  
Peninsula Bicycle Exchange  
Petco  
Drew Pinoli  
Robert & Anne Pochowski  
Thomas Pyle, in memory of Susan L. Pyle  
Redwood Gospel Assembly  
Lynn Relyea  
Dennis Rossman  
Jeff & Sandra Ruggles  
Helen Rutt & Gil Ohana  
David Sacarelos  
Silicon Valley Speech  
Skyrise Real Estate Group  
Smith Family Foundation  
John & Susan Sontag  
St. Mark Lutheran Church  
Dennis & Jean Stein  
Parvathanathan Subrahmanya  
Karen L. Taylor  
Ray Tsai  
Tom & Linda Vachon  
Neerja Bhatt & Aniruddha Vaidya  
Venable Foundation  
Robert Groppo & Terry Wight  
Xi Ling Wong  
Don Kumamoto & Peggy Wood  
Katharina & Alistair Woodman

### 1 Day = 300 jars of peanut butter

John & Linda Adams  
Takiar Aditi  
Holly and Sandy Agbayani  
Edwin & Jean Aiken  
Lane A. Albanese  
Thomas Albanese  
Anonymous (11)  
Carol Arnett  
Tab & Rachel Atkins  
Amy Bankhead  
Julian M. Knox & Steven A. Banks  
James Barnette  
Marilyn B. Bearden  
Justin Becker  
Carl & Diane Benson  
Dr. & Mrs. I. B. Bernhardt  
Robert Bernstein  
Herman W. Bilenko  
Lynda & Richard Borrisson  
Robert P. Bosch, in memory of Margaret Noelle Bosch  
Bose Family Charitable Fund  
Edward Bouwhuis  
Mary E. Boyle  
Duane & Louise Bailey Bretzke  
Robert Jill & Gregory Brooks  
Stacy Brown  
Mark Burns  
Cape Cod Village Residents Association  
Chris & Maria Carlotta  
Michele Carlson  
Carolyn's Kids  
Patricia E. Castillo  
Lisa Caywood  
Chris Chan  
Cherry Chase Elementary School & PTA  
Ron Coens  
Debbie Colden & Gary Marker  
Scott Corzine & Reena Khare  
Timothy & Margaret Coté  
CPP Community & Work/Life Committee  
Michael & Michele Cudzinovic  
Anne & Dave Cunningham  
Douglas Daetz  
Kathleen Dibble  
Meghan Douglas  
Bernice L. Eng  
Robert & Julie Estko  
Family Giving Tree  
James H. Feit  
Richard & Christine Ferry  
Janet Fire  
Robin Fisher, Bright Bird Creative  
Phyllis Freeman  
Michael A. Gallagher  
Elahet Gattozzi  
Girl Scouts Troop 60418  
Teik Hee Goh  
Chris Gottbrath  
Russell Gottfried  
Nathan & Edwina Graham  
Alexander & Patricia Gray  
Greystar  
W. Karl & Catherine Gross

William & Carolyn Gross  
Christine Guerra  
Vidur Gupta  
Fidel Gutierrez  
Leslie Murdock & Kathleen T. Hall  
Dixie Lee Harner  
Jeffrey & Janet Harp  
T. J. Hawkins  
Erik Hendriks  
Julio & Joan A. Herdocia  
Heritage Bank of Commerce  
Mary & Brian Hill  
Robert & Vilja Hirsch  
Hans Hoefler  
Jeff & Debbie Hotter  
Mark Hoy  
Hunter Properties  
IBM Volunteer Outreach Council  
Syed & Jamie Imam  
Denis & Dee Imazeki  
Kristin Ingram  
Chris Iremonger  
Irvine Company  
Mikio & Vickie Ishimaru  
Per Jacobsson  
Joyce & Robert Jeckell, in memory of Phyllis Jeckell & Barbara J. Mordy  
Erin R. Jew  
Clay Jonas-Carrell  
Kalpatharu Foundation  
Karen L. Kao  
John Dowding & Denise Kato  
Paul Kavanagh  
John Kearney  
Tiang Lye Khoo  
Paul King  
Sushant Koshti  
James & Claire Lakner  
Barry & Virginia Langdon-Lassagne  
Deb Lawson  
Leadership Sunnyvale  
Dr. Daisy H. Lee, in memory of Dr. Kuo-Wei Lee  
Theresa J. Lees  
Peter & Debra Loomis  
Herbert & Elizabeth Lopez-Aguado  
Emmanuel Lugos  
Leanne Luna  
Sarah Luttman  
Karyn MacKie  
Macy's West  
Rachel Mahaffy  
Blandine Malhet, IMD Switzerland  
Misako Manca  
Ali Abedini & Roksana Sadraei  
Manjili  
Maple Tree Inn  
Noreen & Joseph Maresca  
John Wehner & Ascension Martinez-Wehner  
Myriam McAdams  
Leona & David McDonald  
Mary Elaine McNery  
Kevin McGreevey  
Marie McMullin  
Bryce Alexander McQueen  
Tejal Mehta  
Janet Mello  
Marc & Jennifer Merlin

David & Kathy Moore  
MGM Real Estate, Dennis & Linda Moreno  
Morgan Stanley Wealth Management  
Carol L. Morrow  
Douglas Mow  
Anita Mulcahy  
Arthur & Claudia Muller  
Dr. Ken Sawyer, Murphy Ave. Pet Clinic  
David & Susanne Newswanger  
Ngoc Ha Nguyen  
Jean & Bill Nix  
A. Nocon  
Northrop Grumman Corp.  
Michael Ogawa  
Debbie & David Ojala  
Eldon Okazaki  
Olander Company  
Ronald Olander  
Scott Panzer & Dianne Olivera  
Omelette House  
Orange Theory Fitness  
Lee & Sophia Ott  
Shane & Alyssa Owara  
Palo Alto Networks, Inc.  
Manoj Panicker  
Marie Bernard & Bruce Paton  
Brenda L. Pattison  
PetSmart Sunnyvale  
JB Phipps  
Planet Granite  
Judith Pogue  
Greg & Julie Y. Poist  
Judy E. Poutre  
Gary & Doty Price  
Project Night Night  
Stephen & Karen Quick  
Sandra Ramer  
Kathy & Matt Ready  
Mary Ann Reilly  
Tim & Yolanda Risch  
Roy & Marsha Rocklin  
George & Charlotte Rogers  
Elaine T. Rowan  
Trudi E. Ryan  
Quabid Safi  
Samuels Family Fund  
Saratoga High School  
Puneet Sarna  
Hannah Sarver  
Arthur Saville III  
Susan & Alan Schenck  
Mr. & Mrs. Robert Schlosser  
James & Joan Schulze  
Kathi Schweighofer  
Eugene Segna  
Michael & Lesley Sehnert  
Mark & Elizabeth Semmelmeier  
Parth Sethia  
Clifton & Karen Shak  
Eric Siegel  
Susan P. Silver  
Mike & Patti Simone  
Robert Kehl Sink  
Raymond & Yvonne Skitt  
Susan Slakey  
Gerard Davies & Jody Solow-Davies  
Jerry Burger & Marlene M. Somsak  
St. Thomas Episcopal Church

Douglas & Alexandra Standing  
Mr. & Mrs. Larry Stone  
Maryrose Sullivan  
Stephen Sullivan  
Sunnyvale Middle School  
Sunnyvale Host Lions  
Sunnyvale Garden Club  
Sunnyvale Martial Arts Academy  
Sunnyvale Singers  
David & Beverly Swanson  
Roshan Baliga & Nenuca Concepcion  
Syquia  
Theron Takaki  
Stanley & Teresa Terada  
Deena Thomchick  
Rose-Marie Twu  
Unitarian Universalist Fellowship of Sunnyvale-The Social Justice Committee  
Richard & Jeanette Vargus  
Gary & Sharon Vergho  
Richard Wales  
Joseph Ribera & Mary-Ann Wallace  
Peter & Joy Wallack  
James & Rose Waltz  
Ying-Chih Wang  
Louise Warburton  
Raymond C. & Lynn D. Warneck  
Allen & Cecilia Watson  
Brad & Deborah Wetmore  
Pay J. Wiggins  
George Winston  
Adeline Wong  
Brenda Lee & Jason Wong  
Dudley Wong  
Stacy Wong  
Simone Wright  
Cindy Kuan Yang  
James M. Zazkowski  
Janaan Zender

## \$\$ Double Your Dollars

You may be able to make your donation to SCS go farther! Be sure to check with your company to see if they will match your contribution. If your company participates, just ask them for a matching gift form and send it to us with your contribution. We will take care of the rest!

**FYI, some companies even match gifts by retirees and/or spouses!**

# We Need Toys!

Please donate a new toy (valued at \$25 or more) for a child in need this holiday season. We are accepting donations RIGHT NOW @ 725 Kifer Road, Sunnyvale.

Monday - Friday | 8:30 AM - 5:00 PM

Saturdays (1st & 3rd) | 9:30 AM - 11:30 AM

All Sunnyvale Fire Stations Nov. 5 - Dec. 15 / 9 AM - 7 PM



We especially need toys for children ages 7 - 11. Thank you!

## Save the Date

All events are free unless otherwise noted.

### Annual SCS Holiday Auction

Elks Lodge, 375 N. Pastoria, Sunnyvale

Thursday, November 15, 2018

5:00 - 7:30 PM

### Rides for Toys

Macy's Parking Lot  
Downtown Sunnyvale

Saturday, November 24, 2018

10:00 AM - 1:30 PM

### Giving Tuesday - SCS Open House

Sunnyvale Community Services  
725 Kifer Road, Sunnyvale

Tuesday, November 27, 2018

2:00 - 6:00 PM

### Sunnyvale Singers Holiday Benefit Concert

Trinity Church of Sunnyvale  
477 N. Mathilda Avenue

December, 2018

Date TBA

### Poverty Simulation

Sunnyvale Presbyterian Church  
728 W. Fremont Ave., Sunnyvale  
(watch our website for more information)

Friday, January 18, 2019

8:30 AM - 12:00 PM

## Board of Directors

2017 - 2018

### Camille Barnes-Mosley

Program Manager  
Northrop Grumman Systems Corporation - Marine Systems

### Cynthia Bojorquez

Director of Library and Community Services  
City of Sunnyvale

### Mary Bradley

TREASURER  
Finance Director (Retired)  
City of Sunnyvale

### Katie Ferrick

Director of Community Relations  
LinkedIn Corporation

### John Harrison

Chaplain, Spiritual Care Services  
El Camino Hospital

### Shane Jacksteit

PAST PRESIDENT  
Financial Advisor  
Edward Jones

### Roberta Kiphuth

President  
Detati Digital Marketing

### Duane Loos

Group V.P., Global Operations & Planning,  
Display & Solar  
Applied Materials, Inc.

### Margaret Mannion

Program Manager, Central Field Labs and Tools  
NetApp Corporation

### Jorge Marsal

PRESIDENT  
Senior Pastor  
Sunnyvale International Church

### Barbara McClellan

Community Volunteer

### Dianne McKenna

VICE PRESIDENT  
Community Volunteer

### Tracie Murray

SECRETARY  
Facilities Administrator  
Cedar Crest Nursing & Rehabilitation Center

### Jeremy Nishihara

Manager of Information Systems and  
Human Resources  
Sunnyvale School District

### Carl Rushmeyer

Deputy Chief, Bureau of Police Services  
Sunnyvale Department of Public Safety

### Courtney Shenberg

Director, World Wide Operations Finance  
Apple Inc.

### Amanda Weitzel

Senior Manager, Digital Marketing  
ServiceNow

## SCS Senior Staff

### Carolyn Alexander

Senior Director of Operations

### Marie Bernard

Executive Director

### Tory Bers

Director of Marketing\*

### Terry Chavez

Program Manager of Operations

### Susan Chin

Financial Controller\*

### Tomasine Cole

Program Manager of Homelessness  
Prevention and Rapid Re-Housing

### Carmen Davis

Director of Accounting

### Catherine Farry

Director of Research

### David Hernandez

Director of Social Services

### Anna Luc

Volunteer Coordinator

### Keisha Miller

Program Manager of Client Services

### Arcado Morales

Senior Director of Development

\*Part-time

## Programs and Services

- Financial assistance for rent, utilities, medical care, prescriptions, other critical bills, and rental deposits for homeless families moving into housing for Sunnyvale and Alviso residents.
- Case management for families, seniors, and homeless individuals.
- Emergency food, weekly Produce Mondays, Pantry, Weekend School Food Program, Monthly Food for families and seniors, Kids' Summer Food.
- Work First Sunnyvale, partnership with Downtown Streets Team addressing homelessness through the dignity of work.
- Community Holiday Center, affording clients the dignity of selecting a two-week supply of food, new gifts for infants through teens, and a practical household gift.
- Budgeting assistance, support counseling, and advocacy.
- Workshops and referrals to medical, mental health, employment, shelter, education and senior legal problems.
- Clothes, backpacks/school supplies, household items, bus passes and gas vouchers.

## SCS Wish List



Visit our website for the most needed items.

[www.svcommunityservices.org/donate-wish-list.html](http://www.svcommunityservices.org/donate-wish-list.html)

Many thanks to  
**Alpha Graphics**  
and **Chase VP** for  
their discounts.

alphagraphics

Newsletter  
designed &  
produced by  
**Bright Bird Creative**

BRIGHT  
BIRD  
creative

